

Mountain Area Plan Update

Focus Group Meeting #1

October 24th, 2022



CAL POLY
City & Regional Planning
COLLEGE OF ARCHITECTURE
& ENVIRONMENTAL DESIGN

Good evening, everyone! Thank you for coming to this public outreach meeting. We appreciate your time and the opportunity to collaborate with all of you.

Project Team



CAL POLY
City & Regional Planning
COLLEGE OF ARCHITECTURE
& ENVIRONMENTAL DESIGN

This project is a partnership between the County of Tulare and students from Cal Poly San Luis Obispo. We are fourth-year undergraduate students in the City and Regional Planning program at Cal Poly, San Luis Obispo, on the central coast of California. I would also like to introduce our professor and faculty supervisor, Dr. Cornelius Nuworsoo, as well as the other members of the project team.

Agenda

1. Project Area
2. What is an Area Plan?
3. Community Planning Process
4. Break-out Discussion Groups
5. Break
6. Regroup/Presentation
7. Thank you and Questions

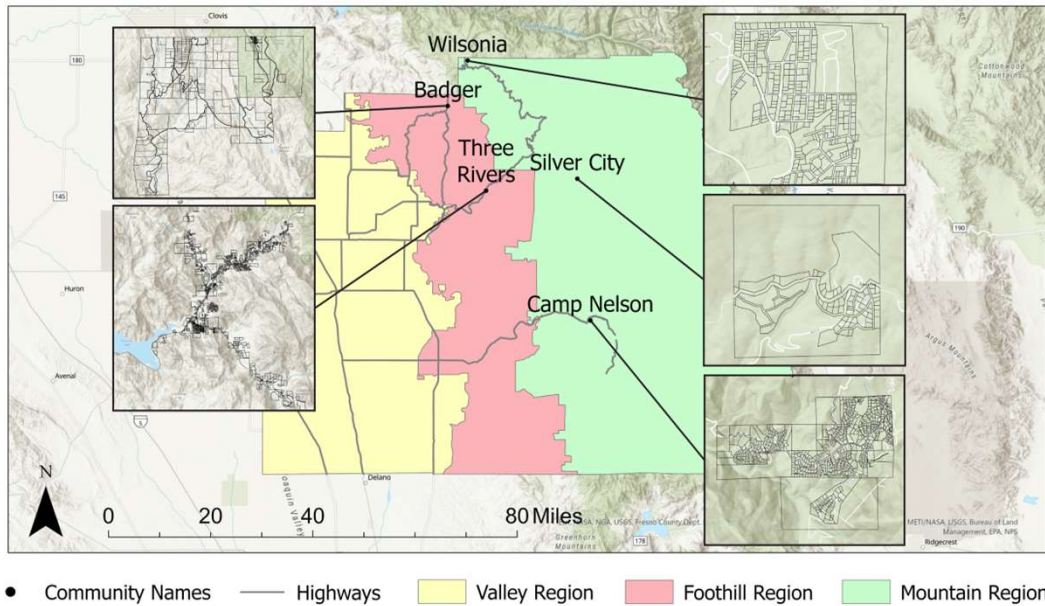
This is the first of four public meetings for the Mountain area planning project,

Today, we will define the project area, explain what an Area Plan encompasses, and the process it entails.

Next, we will discuss in small groups where settlements in the study area are today. Then we will take a short break to summarize findings from each group and regroup to report findings to all present.

Finally, we will wrap up with questions you might have.

Settlements in the Planning Area



The Tulare County General Plan divides settlements into the three regions showing on this map as The Valley Region in yellow, the Foothill Region in pink, and the Mountain Region in light green. This is to recognize the differences in certain planning issues between the regions. For instance, topography affects the sizes of settlements and accessibility.

This project is focusing on the 5 communities highlighted on the map. Badger and Three Rivers are in the Foothill Region but essentially serve as gateways to the mountain area. Among the settlements in the mountain area, this project is focusing on Wilsonia, Silver City, and Camp Nelson.



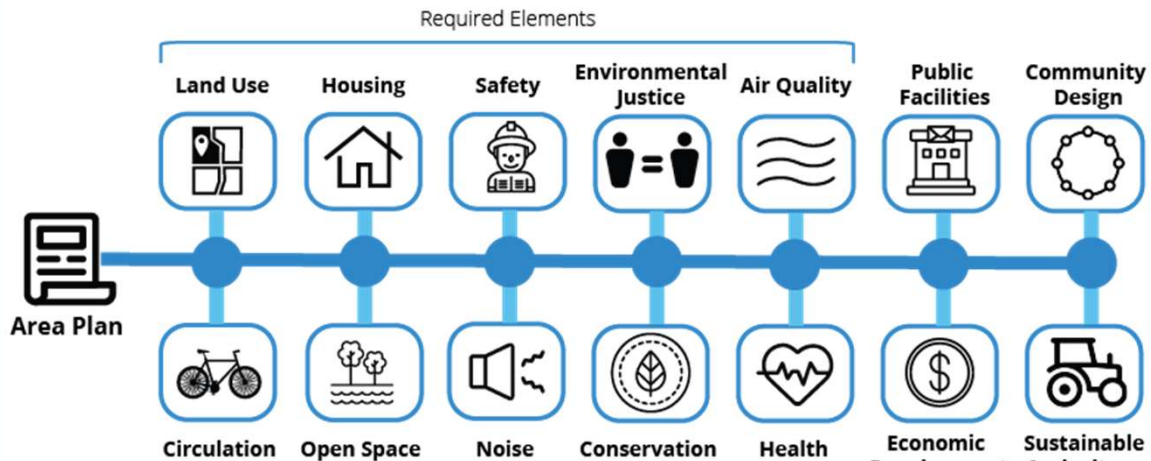
What is an Area Plan?

What is an Area Plan?

Area Plans and Community Plans are blueprints to guide the future development of settlements within larger jurisdictions. Upon adoption, the Mountain Area Plan would become part of the larger Tulare County General Plan.

The goal is to develop a plan that would establish a vision for developing the unique characters of various settlements.

Plan Elements (Topics)



California State law requires every City, community, area, and county to prepare a plan to guide future development. The Law also prescribes the topics (called “elements”) that these future development plans must cover.

Depending on circumstances, there are 7 to 9 **required elements**. These are: Land Use and Circulation; Housing and Open Space; Safety and Noise; Environmental Justice and Conservation; as well as Air Quality.

In addition, the plan will also include 5 **additional elements** to address the unique needs of the study area. These elements include Health, Public facilities, Economic Development, Community Design, and Sustainable Agriculture.

The next several slides explain what various elements entail.

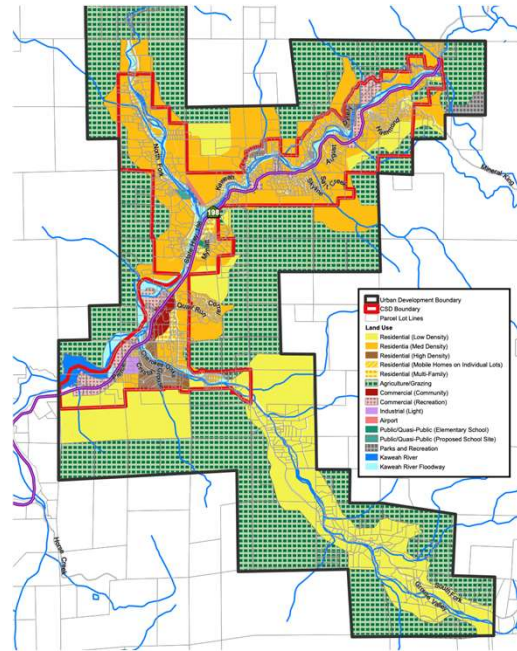


Land Use

What Goes Where



Example of Residential Land Use in Three Rivers



Three Rivers Land Use Map

LAND USE

Land use essentially determines **"What activity goes where"** in a community

There are five basic types of land use: residential, commercial, industrial, open space, and public-institutional uses.

This element provides guidelines on the intensity of development and how to ensure that neighboring land uses are compatible with and complement each other. For example, it would recommend placing parks next to schools and those two uses near housing.



Circulation

Facilitating Movement



CA 198

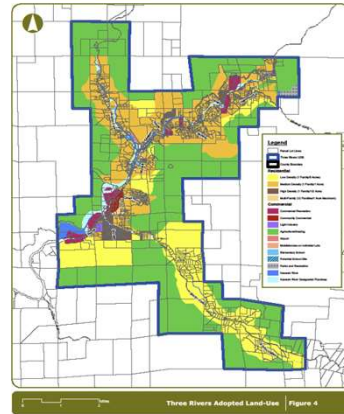


Generals Highway

CIRCULATION

The Circulation element involves managing all modes of transportation to create the most efficient, healthy, and safe transportation networks throughout the area. It addresses infrastructure and facility needs to enable fire access, convenience in parking, emissions control, traffic control, safe routes to schools, and movement of commercial goods.

Housing Element



HOUSING

The housing element is a comprehensive assessment of current and projected housing needs for all economic segments of a community. It addresses the variety and types of housing, condition of the housing stock, and its affordability for various income groups. To emphasize the importance of housing as a fundamental human need, State law mandates its preparation and update every five to eight years depending on circumstances.



Conservation

Preserving the Natural Environment and Local Resources



Lake Kaweah



Giant Sequoias

CONSERVATION

The conservation element involves maintaining a serene and attractive natural environment by managing uses that create excessive impacts on local resources and natural features. It emphasizes the protection and preservation of natural resources, including water, forests, soils, rivers, mineral resources, and wildlife.



Open Space

Open-space land is any parcel or area of land or water that is essentially unimproved and devoted to an open-space use



OPEN SPACE

The Open Space element identifies measures for the long-range preservation and conservation of open-space lands.

Open-space land is any parcel or area of land or water that is essentially unimproved and devoted to an open-space use such as open space for

- Natural Resources
- managed production of resources, like agriculture
- Outdoor Recreation
- Public Health and Safety
- Military Support
- And Tribal Resources



Noise Element

Recognize, analyze, and reduce the main sources and impacts of noise.



NOISE

The noise element identifies and appraises noise problems within a community and forms the basis for land use distribution.

The element identifies noise sources and levels, sensitive uses that are not compatible with significant noise, and general compatibility of various land uses to each other. Common sources of noise include:

- Highways and freeways;
- Railroads
- Airports
- industrial plants, and
- Construction



Safety Element

Address risks associated with disasters, including earthquakes, floods, fires, and landslides.



SAFETY

The Safety Element deals with protecting people from unreasonable risks associated with environmental disasters, including earthquakes, floods, fires, and landslides as well as keeping communities safe from internal threats, like crime.

Besides land use planning, a community can further address safety risks through the adoption of evacuation plans and appropriate building codes.



Environmental Justice

“The fair treatment of people of all races, cultures, and incomes with respect to the development, adoption, implementation, and enforcement of environmental laws, regulations, and policies.” (California Governmental Code)



ENVIRONMENTAL JUSTICE

The Environmental Justice Element addresses “the fair treatment of people of all races, cultures, and incomes with respect to the development, adoption, implementation, and enforcement of environmental laws, regulations, and policies.”

The Element requires the engagement of a wide cross section of stakeholders, with special attention on disadvantaged communities, in prescribing and implementing policies to ensure that land use and environmental decisions are fair.



Air Quality



AIR QUALITY

The Air Quality element recognizes and monitors how air quality can impact public health. It identifies sources of pollution and seeks to reduce them. The element maintains consistency with the prescriptions of San Joaquin Air Pollution Control Board for necessary changes in behaviors as it monitors air quality in the San Joaquin Valley.

Common sources of air pollution are:

- Cars and trucks
- Wind blown dust
- Agricultural operations
- industrial plants
- And Construction



Public Facilities and Services

- Provides convenient and efficient services in response to basic human needs.



PUBLIC FACILITIES AND SERVICES

The Public Facilities and Services Element addresses the provision of convenient and efficient services in response to such basic human needs as education, safety (in terms of police and fire protection), water and sewage, electricity, sanitation, shelter, recreation, and worship.

The adequacy of these infrastructure and services contributes to the quality of life of residents and visitors.



Health

Health involves **access to...**

- Medical services
- Recreation
- Healthy foods
- Parks and open space
- And more...



HEALTH

The Health Element identifies measures of physical and mental wellness in the community which includes proximity to medical care, recreation facilities, healthy foods, and healthy air.

The element therefore addresses the availability and location of grocery stores, pharmacies, community exercise spaces, and so on to facilitate a good quality of life.



Community Design + Sense of Place

Characteristics that make an area unique and identifiable

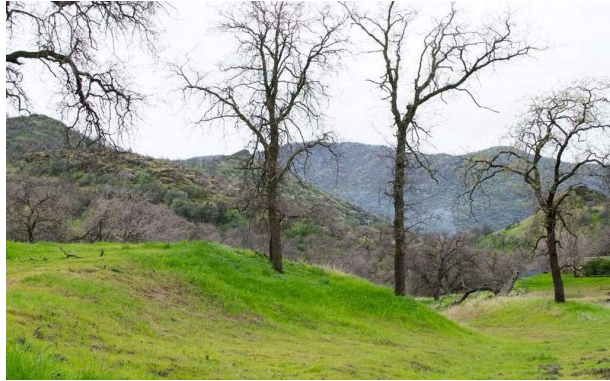


COMMUNITY DESIGN AND SENSE OF PLACE

The Community Design Element presents a framework of policies and actions in determining the form, quality, and character of the built environment. It recommends guidelines to emphasize those characteristics that make an area unique and identifiable from other communities.



Sustainable Agriculture



SUSTAINABLE AGRICULTURE

Sustainable agriculture integrates agriculture and sustainability principles to promote clean air and water, healthy soils, habitats, and ecosystems In providing for society as a whole.

The element emphasizes the retention of productive agricultural lands and sustaining the role of agriculture as a mainstay of the local economy. In so doing, it help can preserve prime agriculture land from urban sprawl.



Economic Development

- Promotes development in order to implement Community and Tourism opportunities.



ECONOMIC DEVELOPMENT

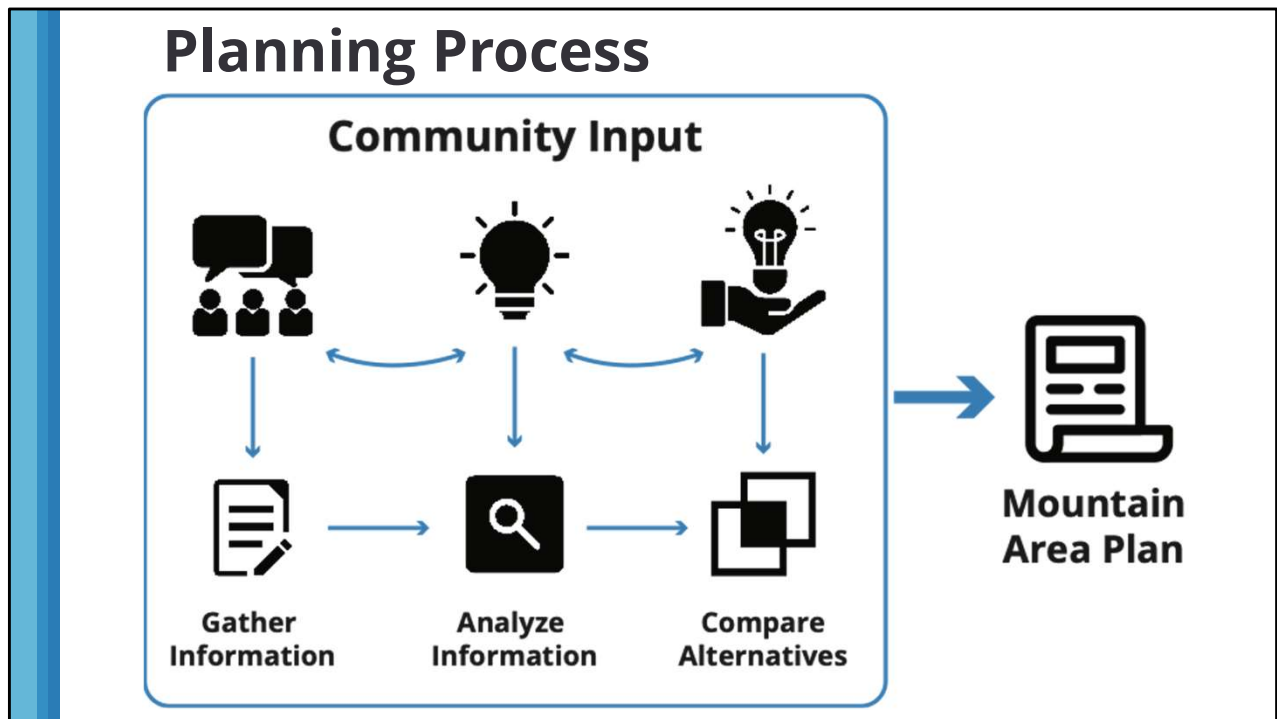
The Economic Development Element provides guidance on attracting and retaining businesses to maintain, expand, and enhance the local economy through support for diversity of establishments, expansion of jobs, and creation of vibrant commercial centers.

Economic development can enhance revenues for use in expanding and upgrading public facilities.



Planning Process

Now, let us review the planning process and your participation



We can break down the planning process into three key sets of activities.

- We continually want your input throughout the entire process in order to develop a document that reflects your aspirations.
1. The **first phase** is for **Information Gathering**.
 - Phase 1 started in September and includes collection of such background information as a Land Use Inventory, demographic research data, and assessment of documents on projects and plans related to the study area.
 2. The **second phase** involves **analyzing information** to understand where the mountain area communities want to be
 3. And the **third phase** involves **developing and comparing growth alternatives** to answer the question: How do we get where you would like your communities to be?

The project involves **four public meetings** to be held in Three Rivers for convenience. Today's meeting is the first. The project team will continue to gather public input via the project website and local events. The second is a month away on November 28.

Together with community input, the planning team will assemble **two essential documents** for The mountain area: The *Background Report* and the *Draft Mountain Area Plan*.

Today is an essential first step in gathering community input to help the planning team identify the **strengths, weaknesses and opportunities** of the settlements in the study area.

Discussion Group Instructions

Directions

1. 15 minutes per questions
2. First 2-3 minutes collecting and writing your thoughts on the distributed papers
3. Use the remaining time for group discussion
4. Present summary findings

At this point, we are going to begin a series of small-group discussions. We have three core questions, which we will share shortly. Discussions are to assist in understanding where the mountain area is today.

- Each table will have 15 minutes per discussion question. You can spend the first 2 to 3 minutes collecting and writing down your thoughts on handouts. The remainder of the allotted time is for group discussion. While you ponder and discuss the questions, please keep in mind the key topics of the Area Plan that are on display at the center of each table.

- Every discussion group has a Cal Poly facilitator who will moderate this process and a notetaker who will assure all thoughts and ideas are recorded. And at the end of the entire discussion session, please identify an area resident at each table to give a summary of the key takeaway from the table.

Discussion Group Instructions

Ground Rules

- There are no wrong statements
- No judgments on other people's ideas
- Keep statements brief so we can get to everyone's ideas

Before we start, we want to lay out a few ground rules for the discussion groups:

- There are no wrong statements
- No judgements on other people's ideas
- Keep statements brief so we can get to everyone's ideas

I will be keeping time and providing notice on the screen when there are 10 minutes, 5 minutes, and 1 minute remaining.

Discussion Questions

1. What are the **STRENGTHS** of your community?

"I like that the Mountain Area _____"

2. What does your community **LACK**?

"The Mountain Area is missing _____"

3. What would make your community **BETTER**?

"I wish the Mountain Area _____"

These are the three questions that we are going to discuss during the small-group activity:

- What are the **STRENGTHS** of your community?
- What does your community **LACK**?
- What would make your community **BETTER**?



What are the **STRENGTHS** of your community?

Let us begin with question 1:

What are the STRENGTHS of your community?

At this time, I will hand it off to the facilitators at your tables for further instructions.



What are the **STRENGTHS** of
your community?

10 minutes left

10 minutes more for question 1



What are the **STRENGTHS** of
your community?


5 minutes left

5 minutes more for question 1

**What are the STRENGTHS of
your community?**

1 minute left

1 minute left for question 1



What does your community **LACK?**

Let us now turn to Question 2:

What does your community LACK?

Please turn your attention back to your facilitators for further instructions

**What does your community
LACK?**

10 minutes left

10 minutes more for question 2

**What does your community
LACK?**

5 minutes left

5 minutes more for question 2

What does your community
LACK?

1 minute left

1 minute left for question 2



What would make your community BETTER?

Let us now begin discussion on Question 3:

What would make your community BETTER?

Please turn your attention back to your facilitators for further instructions



**What would make your
community BETTER?**

10 minutes left

10 minutes more for question 3



**What would make your
community BETTER?**

5 minutes left

5 minutes more for question 3



**What would make your
community BETTER?**

1 minute left

1 minute left for everyone to wrap up their thoughts on question 3.



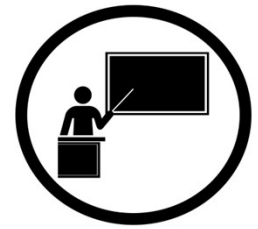
Summarize Ideas

Thank you everybody for participating and answering these questions.
At this time, we would like you to spend the next five minutes summarizing your ideas.
We also ask that you elect one resident per table to present your findings.

5 Minute Break



As we wait to hear from all of the groups, please use this time to grab a refreshment or use the bathroom. We will reconvene in 5 minutes.



Summary Presentation

At this time, we would like to hear the summary of findings from each group, starting with "this" table *(choose an order of tables that would flow most smoothly) *go through each table's summary**

Thank you all so much for sharing your findings, we will use this information to help develop a plan reflective of the aspirations and needs of the mountain area.

Upcoming Meeting

Community Meeting #2

November 14, 2022

From 6:00 PM to 8:00 PM

Three Rivers Memorial Building,

43490 Sierra Dr, Three Rivers, CA 93271

The next public meeting is the Community Visioning Meeting, which will take place on November 14th from 6 to 8 PM at the Three Rivers Memorial Center. We will be presenting the findings from this first meeting together with other background research conducted. And we will again ask for further community input and feedback



Have Questions?

Feel free to ask a team member!

At this point, we want to pause and see if any meeting participants have questions for the planning team or County officials.

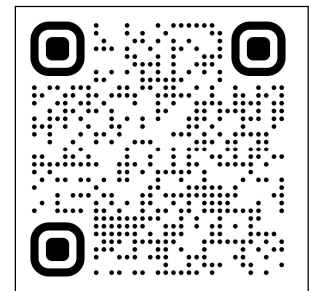
Your participation is greatly appreciated.

Please continue to be a part of the process!

For more information or to comment further, please visit:

Website: <https://threeriverscommunityplan.github.io/>

Email: tularemountainplan@gmail.com



Thank you so much for attending this first community meeting, and we hope to see all of you again at the Three Rivers Memorial Building on Monday, November 14th for the Community Visioning Meeting!

You can find further information and updates on the project website and Facebook page. Also, please feel free to email us with any questions or comments at tularemountainplan@gmail.com

We will be sticking around to chat or answer any questions.

Thank you again!